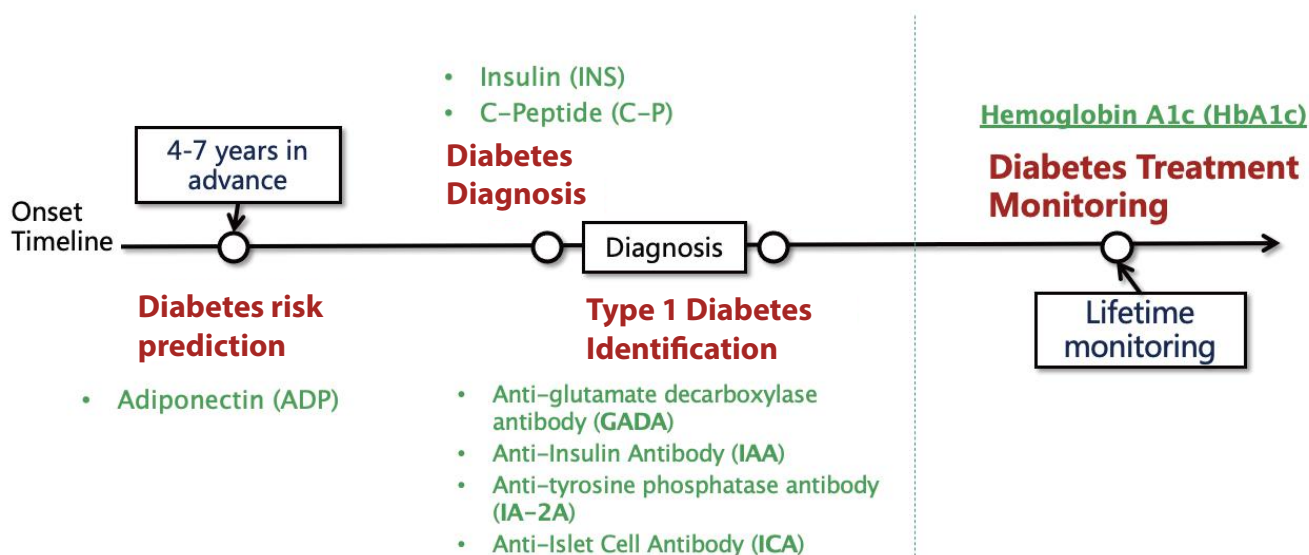


THE PATH TO DIAGNOSE DIABETES STARTS HERE

About 422 million people worldwide have diabetes, and 1.5 million deaths are directly attributed to diabetes each year.

COMPLETE DIABETES DIAGNOSTIC SOLUTION

Single test - High throughput - Chemiluminescent Immunoassay



Clinical significance:

- **Hb1Ac:** Diagnosis and screening of prediabetes and diabetes; it reflects the blood sugar control of diabetic patients in the past 2-3 months. The higher the hemoglobin A1c, **the more blood sugar binds to hemoglobin, and the more severe the diabetes is.**
- **Insulin & C-Peptide:** The level of C-peptide can be measured to understand the state of endogenous insulin secretion.
- **IAA, ICA, GADA and IA-2A:** Diagnosis **of Latent autoimmune diabetes** in adults (LADA), IAA appears earlier, especially for young patients, and is an important marker for screening or early diagnosis of type 1 diabetes. However, as the disease progresses, IAA will gradually decrease, while ICA, GADA, and IA-2A will gradually increase.

Recommendation guidelines:

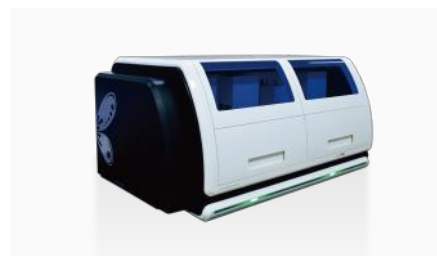
Hotgen Diabetes Detection Solution: Chemiluminescence Immunoassay Analyzer



MQ60 Smart



MQ60 ProB



MQ60 Plus

| Items | Sample | Linear range | Testing analyzers |
|-------|--|-----------------|----------------------------------|
| ADP | Serum, plasma, whole blood (EDTA, heparin) | 0.05-60 µg/ml | MQ60 Smart, MQ60 proB, MQ60 Plus |
| HbA1c | Whole blood(EDTA) | 4-16 % | MQ60 Smart, MQ60 proB, MQ60 Plus |
| GADA | Serum, plasma, whole blood (EDTA, heparin) | 5-250 IU/ml | MQ60 Smart, MQ60 proB, MQ60 Plus |
| IA-2A | Serum, plasma, whole blood (EDTA, heparin) | 5-250 IU/ml | MQ60 Smart, MQ60 proB, MQ60 Plus |
| IAA | Serum, plasma, whole blood (EDTA, heparin) | / | MQ60 Smart, MQ60 proB, MQ60 Plus |
| ICA | Serum, plasma, whole blood (EDTA, heparin) | / | MQ60 Smart, MQ60 proB, MQ60 Plus |
| C-P | Serum, plasma, whole blood (EDTA, heparin) | 0.01-40 ng/ml | MQ60 Smart, MQ60 proB, MQ60 Plus |
| INS | Serum, plasma, whole blood (EDTA, heparin) | 0.2-1000 µIU/mL | MQ60 Smart, MQ60 proB, MQ60 Plus |

Application Scenario:

- Family history of type 2 diabetes in a first- or second-degree relative
- Physical inactivity
- History of heart disease
- High blood pressure (hypertension)
- Impaired glucose tolerance or impaired fasting glucose (also known as pre-diabetes) on previous blood-glucose testing
- Women who had gestational diabetes or who gave birth to a baby weighing more than 9 pounds
- Polycystic ovarian syndrome (POI)
- HDL (high-density lipoprotein) cholesterol level ≤ 35 mg/dL triglyceride level ≥ 250 mg/dL

HOTGEN assays have excellent performance to help clinicians understand the cause of a patient's hypoglycemia or differentiate between type I and type II diabetes.