

Features of chemiluminescent cytokine detection technology

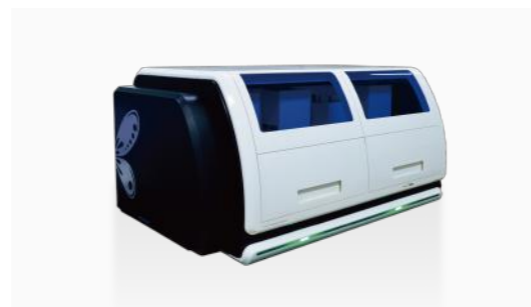
MQ60 (smart, proB, plus) series single cartridge chemiluminescence immunoassay analyzer



MQ60 smart



MQ60 ProB



MQ60 plus

Features

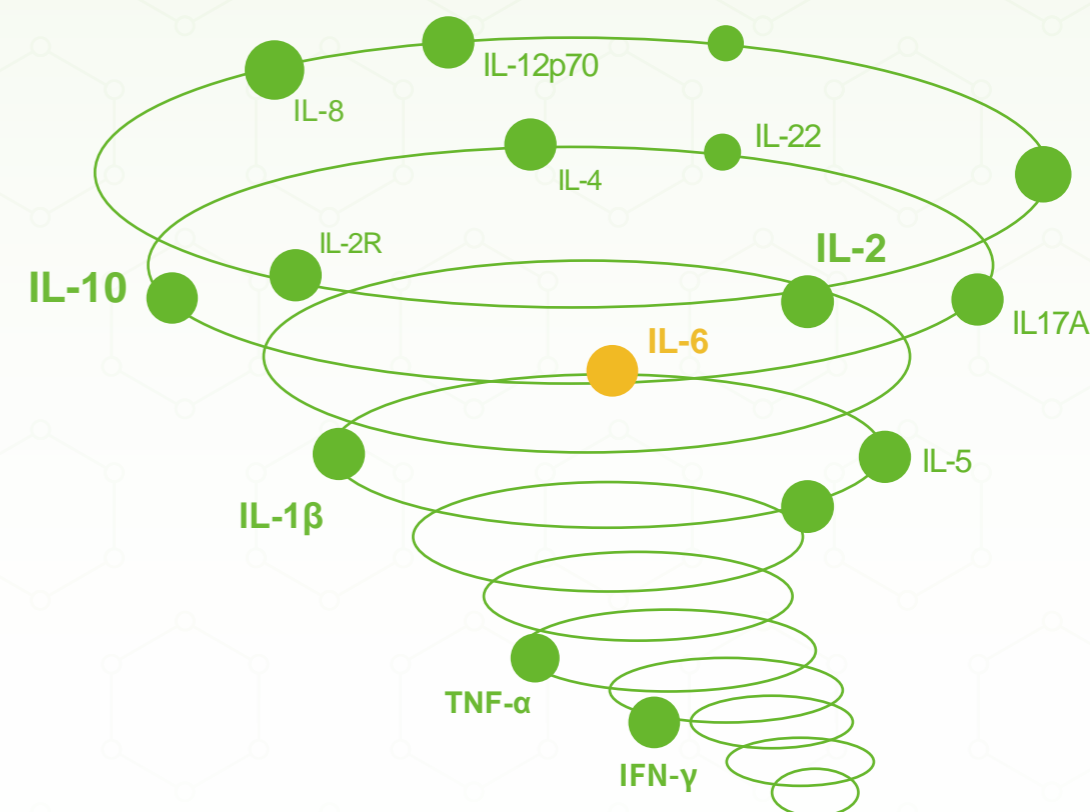
- Liquid phase reaction, chemiluminescence method, high sensitivity, stable results;
- Reagents are packaged in single servings and tested on demand;
- No consumables, no hidden costs, no limitation from on-board stability;
- Fast and high-throughput: complete 6, 12 or 24 tests in 17 minutes;
- Accurate results with quality control.

Cytokine Project Product Information

Parameter	Linear Range	Reference Value
IL-1 β	3-1000 pg/mL	<4.9 pg/mL
IL-2	2.5-1000 pg/mL	<12 pg/mL
IL-2R	5-7500 U/mL	228-724 U/mL
IL-4	2.5-2500 pg/mL	<12.8 pg/mL
IL-5	2.5-2500 pg/mL	<5.9 pg/mL
IL-6	1.5-5000 pg/mL	<7 pg/mL
IL-8	5-7500 pg/mL	<63 pg/mL
IL-10	3-1000 pg/mL	<9.5 pg/mL
IL-12p70	2.5-1000pg/mL	<10.5pg/mL
IL-17A	2.5-2500 pg/mL	<5.6 pg/mL
IL-22	1-1000pg/mL	<3.71pg/mL
IFN- γ	2-1000 IU/mL	<4 IU/mL
TNF- α	3-1000 pg/mL	<8.5 pg/mL

Hotgen 

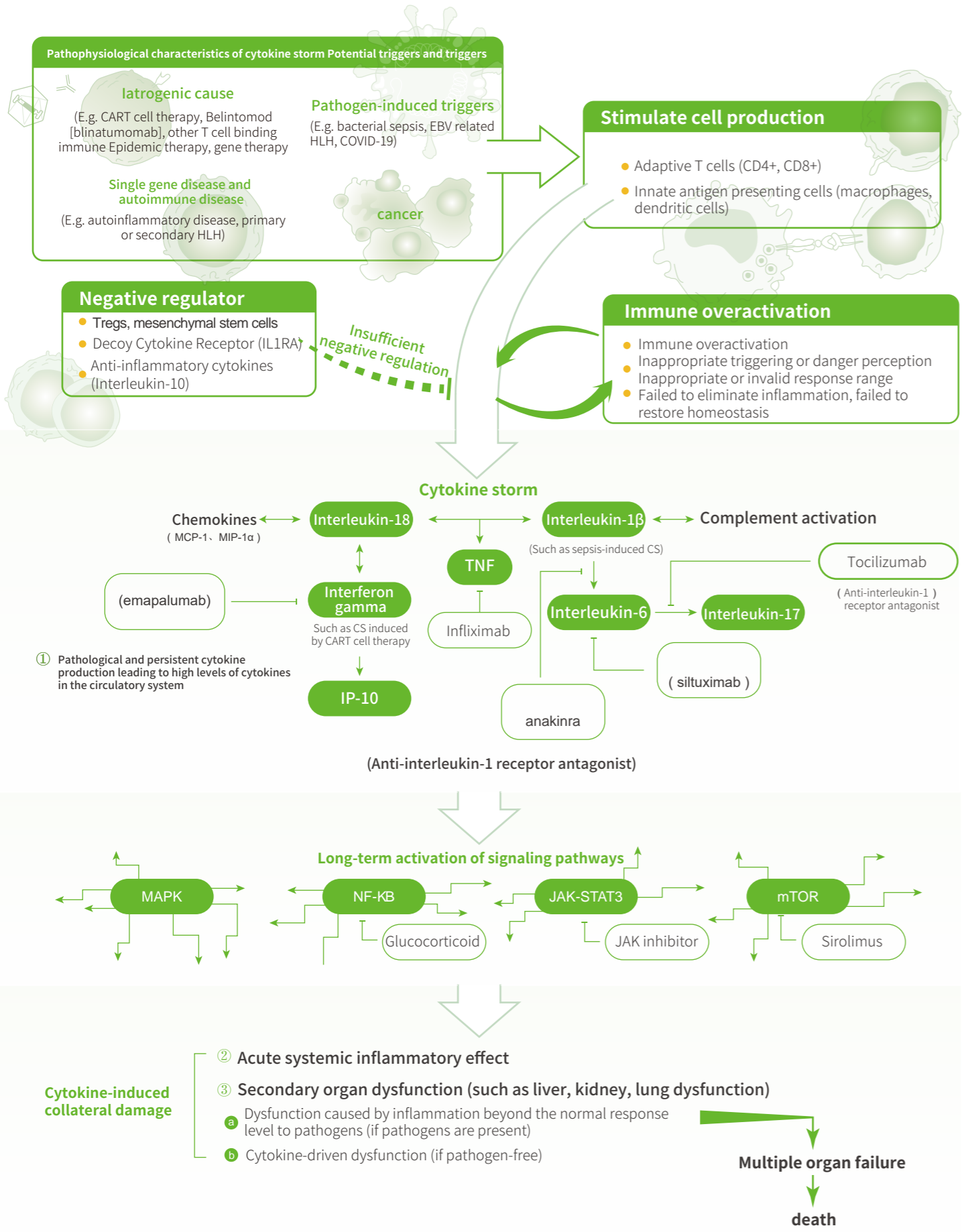
Stock Code **688068**



Cytokine series reagents

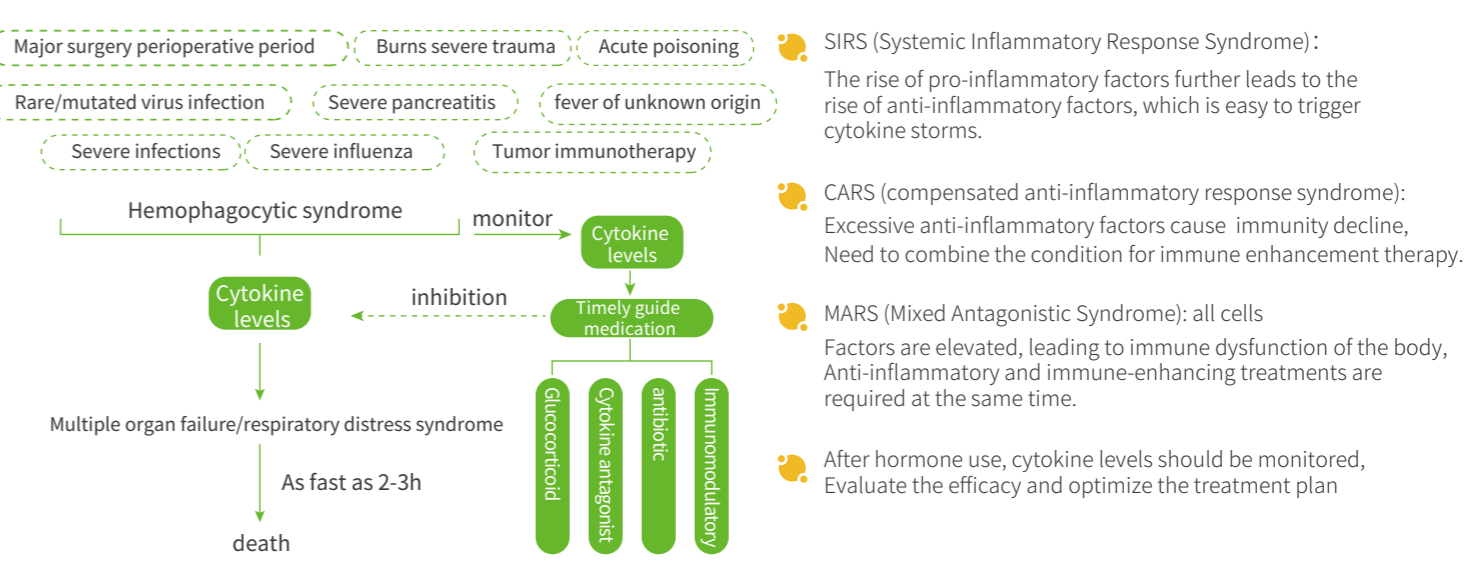
Chemiluminescence method

Characteristics of cytokine detection technology by chemiluminescence method



Cytokine storm. N Engl J Med 2020; 383: 2255-73

Intervention suggestions for different stages of cytokine storm



Cytokines and disease risk prediction

Cancer risk prediction

- Promote tumor progression: IL-1β, IL-4, IL-6, IL-8, IL-10
- Enhance the body's anti-tumor immunity: IL-2, IL-2R

Mental disease risk prediction

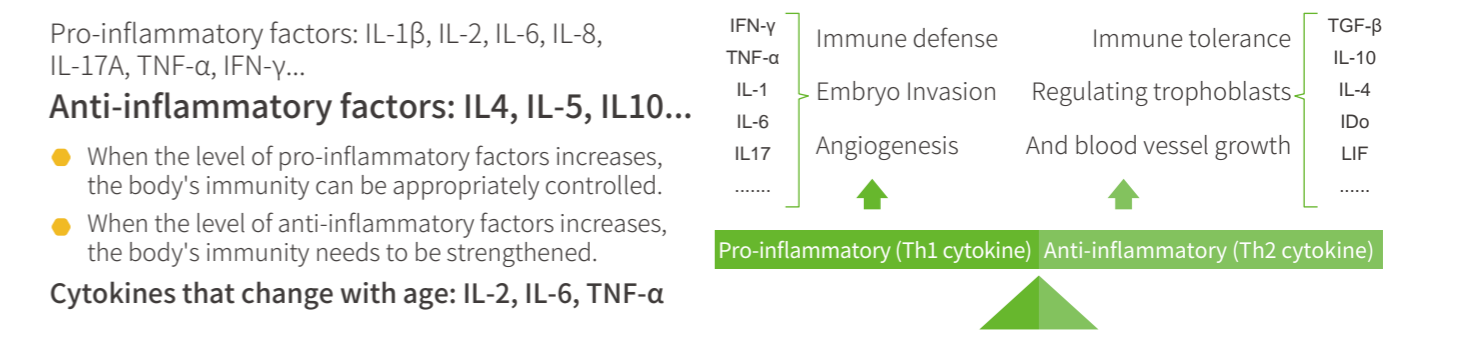
- Depressive manic psychosis: IL-1β, IL-6
- Alzheimer's disease: IL-1β, IL-6, TNF-α
- Schizophrenia: IL-2, IL-6, IL-8, IL-10

Cardiovascular disease risk prediction

- Coronary artery disease: TNFα, IL-6
- Angina pectoris, myocardial infarction: IL-8
- Stroke, vascular disease: IL-2
- Essential hypertension: IL-1β

Reference: 1.Mol Cell Biochem, 2011, 353:159-165. 2.N Engl J Med, 2011, 365:2055-2066. 3.Cancer Investigation, 2014, 32:197-205. 4.Clin Cancer Res, 2008, 14(21):6735-6741. 5.Journal of Neuroimmunology, 2015, 283:50-57. 6.Clinical Biochemistry, 2004, 37:673-678. 7.Circulation, 2010, 101(18):2149-2153.

Cytokine and immune function evaluation



Application Department

ICU, Oncology, Infection, Reproductive, Respiratory, Pediatric, Hematology, Rheumatology, Immunotherapy, etc.